

EN

INSTRUCTIONS
MOBILE APP CONTROL
OF PAC 3910 X

Contents

1. Download and install app	2
2. Preparation	2
3. Create account	2
4. Network configuration	3
5. Connection to Alexa	4
6. Connection to Google Home	4
7. App declaration	4

1. Download and install app

CAUTION: The following QR code is only available for downloading app. It is totally different with the QR code packed with unit.



Android



iOS

- **Android Phone users:**
scan Android QR code or go to Google Play Store, search 'Nethome Plus' app and download it.
- **iOS users:**
scan iOS QR code or go to App Store, search 'Nethome Plus' app and download it.

2. Preparation

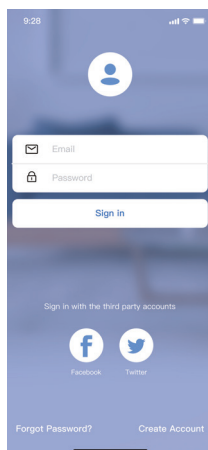
Please ensure your mobile device is connected to Wireless router. Also, the Wireless router has already connected to Internet before doing user registration and network configuration.

Make sure your mobile device has already been connected to the Wireless network which you want to use. Also, you need to forget other irrelevant Wireless network in case it influences your configuration process.

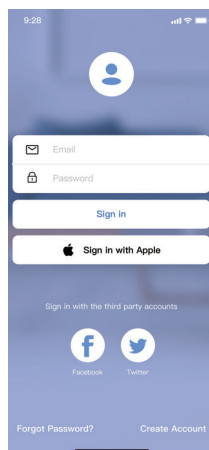
3. Create account

Reminder: When you register to use app, you need read and agree the Data Privacy Notice.

① Click "Create Account"

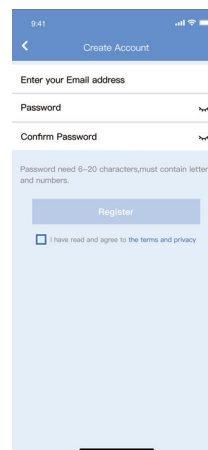


Android



iOS

② Enter your email address and password, and then click "Register"



4. Network configuration

Cautions:

It is necessary to forget any other around network and make sure the Android or iOS device just connect to the Wireless network you want to configure. Make sure the Android or iOS device Wireless function works well and can be connected back to your original Wireless network automatically.

Kindly reminder:

User must finish all the steps in **8 minutes** after powering on AC, otherwise you need to power on it again

Using Android or iOS device to do network configuration

Make sure your mobile device has already been connected to the Wireless network which you want to use.

Also, you need to forget other irrelevant Wireless network in case it influences your configuration process.

Disconnect the power supply of the air conditioner.

Connect the power supply of AC, activate the AP mode (the pictures in the manual are for explanation purpose only. Your machine may be slightly different).

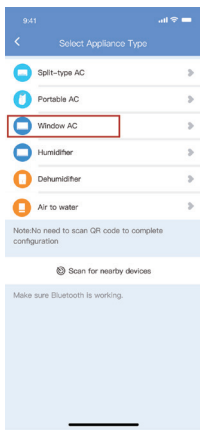
Read the manual of the unit for detailed operations.

When AP appears in the display, It means that the ACWIRELESS has already entered into AP Mode. User can do the next step configuration.

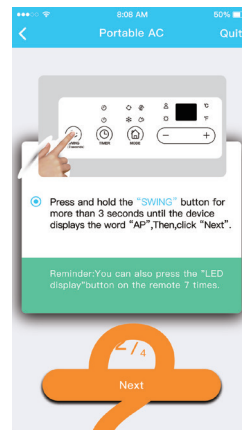
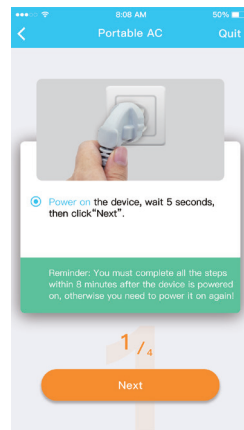
Note: Carry out the network configuration by selecting the device type.

Network configuration by select appliance type:

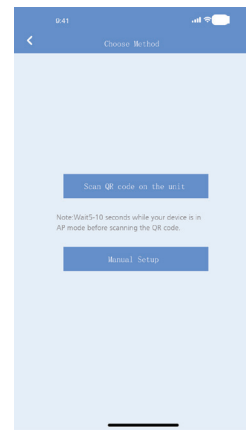
- ① Please select the appliance type.



- ② Please follow the steps to enter "AP" mode.



- ③ Choose the network configuration method.

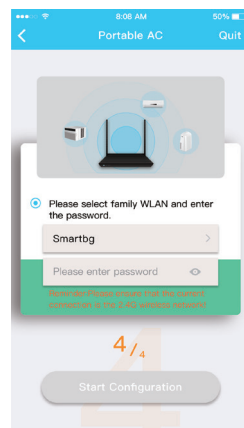


Note:
Step 3 is applicable to Android system only. iOS system does not need this step.

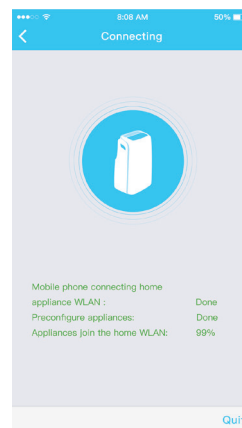
- ④ When choose the "Manual Setup" method (Android). Connect to the wireless network(iOS).



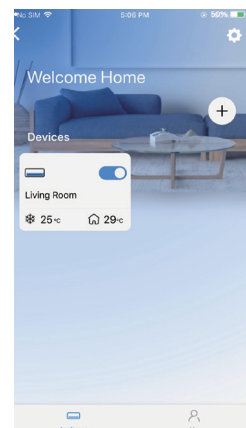
- ⑤ Please enter password.



- ⑥ The network configuration is successful.



- ⑦ Configuration successful. You can see the device in the list.



NOTE:

The device name "air conditioner_AC28" appears in the list of devices. You can change the name to PAC 3910 X yourself.

When the network configuration is complete, the app displays success messages on the screen. Due to the different Internet environment, it is possible that the device status is still displayed as "offline".

In this case, you must call up and update the device list in the app and ensure that the device status is "online".

Alternatively, the user can turn off the device and turn it on again, the device status will be "online" again after a few minutes.

5. Connection to Alexa

Download the latest version of Goggle Home.
Make sure that your devices are connected to the app.

- Open Amazon Alexa and select "Skills & Games".
- Then enter to search for "NetHome Plus*".
Select "NetHome Plus Smart Home Skill *" to enter the details.
- Select "ENABLE TO USE" to go to the NetHome Plus* authorization page.
- Link your NetHome Plus account to your Alexa account, tap the "Agree and Link" button.
- Then your NetHome Plus Smart Home Skill account will be linked successfully.

Now you can add and set up devices and then use Alexa voice control to control devices.

6. Connection to Google Home

Download the latest version of Goggle Home.
Make sure that your devices are connected to the app.

- Open Google Home, tap "Set up device"- "Works with Google", and enter to search "NetHome Plus*".
- Select "NetHome Plus*" and jump to the NetHome Plus authorization page.
- Link your NetHome Plus account to your Google account and tap the "Agree and Link" button.
- Your NetHome Plus Smart Home Skill account will then be successfully linked.

Now you can add and set up devices and then use Google Home voice control to control them.

7. App declaration

Applicable system: IOS,Android.

- ① App can not support the latest software version of Android and IOS system.
- ② Due to special situation may be occurred,we explicitly claims below:
Not all of the Android and IOS system are compatible with app.
We will not be responsible for any issue as a result of the incompatibility.

Wireless safety strategy

- Smart kit only support WPA-PSK/WPA2-PSK encryption and none encryption.
- WPA-PSK/WPA2-PSK encryption is recommended.

Cautions

- ① Due to different network situation,control process may return time-out sometimes. If this situation occurs, the display between board and app may not be the same, please do not feel confused.
- ② Smart Phone camera needs to be 5 mega pixels or above to make sure scan QR code well.
- ③ Due to different network situation, sometimes, request time-out could happen, thus, it is necessary to do network configuration again.
- ④ The app system is subject to update without prior notice for product function improvement.
The actual network configuration process may be slightly different from the manual, the actual process shall prevail.
- ⑤ Please check the service website for more information.

Hereby, we declare that this AC is in compliance with the essential requirements and other relevant provisions of RE Directive 2014/53/EU.

NOTE:

All the illustrations in the manual are for explanation purpose only.
Your unit may be slightly different.

However, there is no guarantee that interference will not occur in a particular installation. If this equipment does cause harmful interference to radio or television reception, which can be determined by turning the equipment off and on, the user is encouraged to try to correct the interference by one or more of the following measures:

- Reorient or relocate the receiving antenna.
- Increase the separation between the equipment and receiver.
- Connect the equipment into an outlet on a circuit different from that to which the receiver is connected.
- Consult the dealer or an experienced radio/TV technician for help.

Simplified EU Declaration of Conformity:

Hereby, Trotec GmbH declares that the radio equipment type (PAC 3910 X – Wifi module) is in compliance with Directive 2014/53/EU.
The full text of the EU declaration of conformity is available at the following internet address:

<https://hub.trotec.com/?id=47570>

**Company will not be liable for any issues and problems caused by Internet, Wireless Router and Smart Devices.
Please contact the original provider to get further help.**

Trotec GmbH

Grebbeener Straße 7
52525 Heinsberg
Germany
+49 2452 962-0
+49 2452 962-200
online@trotec.com
www.trotec.com